



IVORY SHADOW

All of your imagination will happen here

Experience the new and highly innovative world class space facilities with absorption and lighting technology. Located on the 45th floor of BHIRAJ TOWER at EMQuatier in the heart of Bangkok's Central Business District (CBD). The IVORY SHADOW features exclusive helipad and a 180 meter high glass walkway, glass peninsula overlooking the sights of Bangkok's bustling Sukhumvit area.

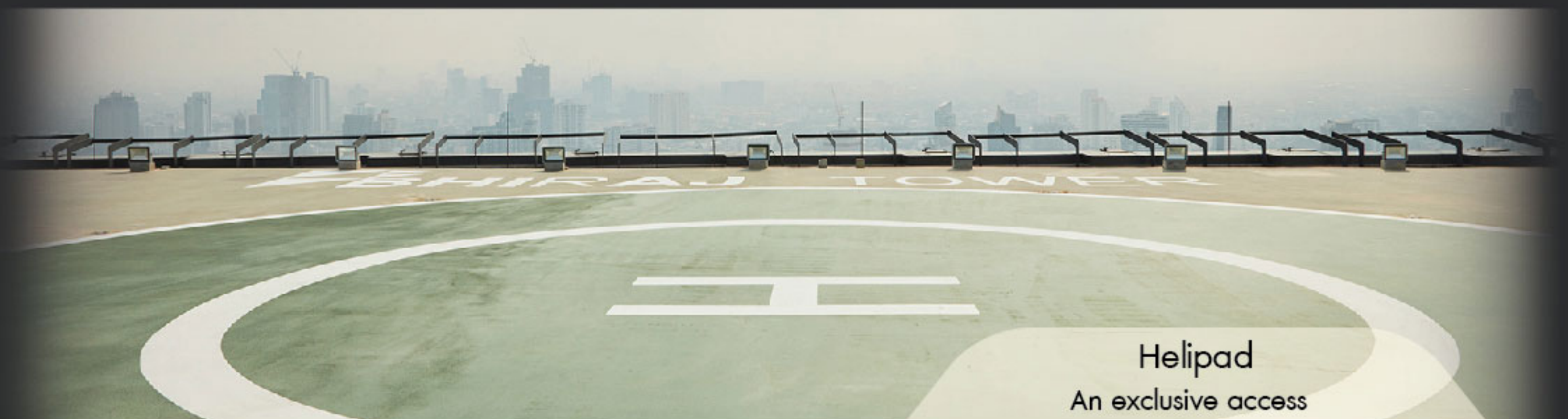
The IVORY SHADOW features



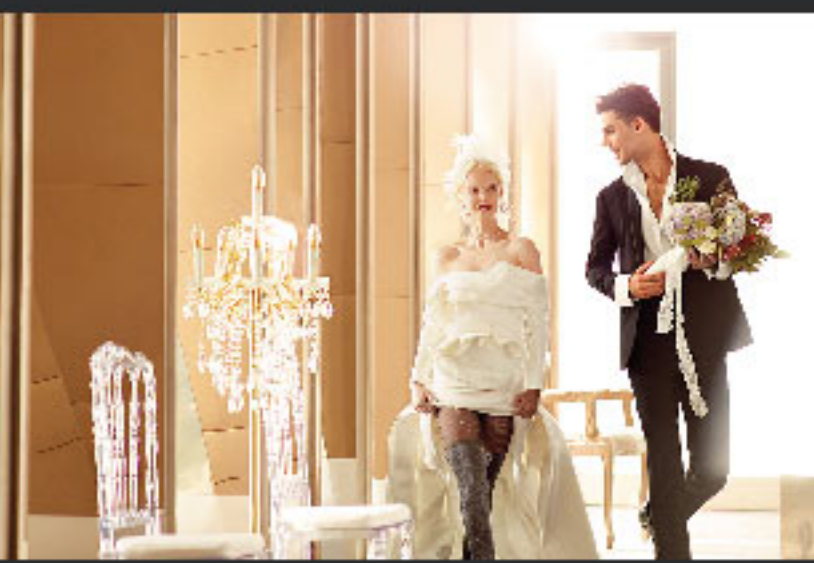
Ivory Shadow Hall
Floor to ceiling windows with nature light



Glass Peninsula
An 11 meter long, 180 meter
high glass walkway on the 45th floor



Helipad
An exclusive access



Wedding

Where the romantic expectations of every couple are satisfied by spectacular



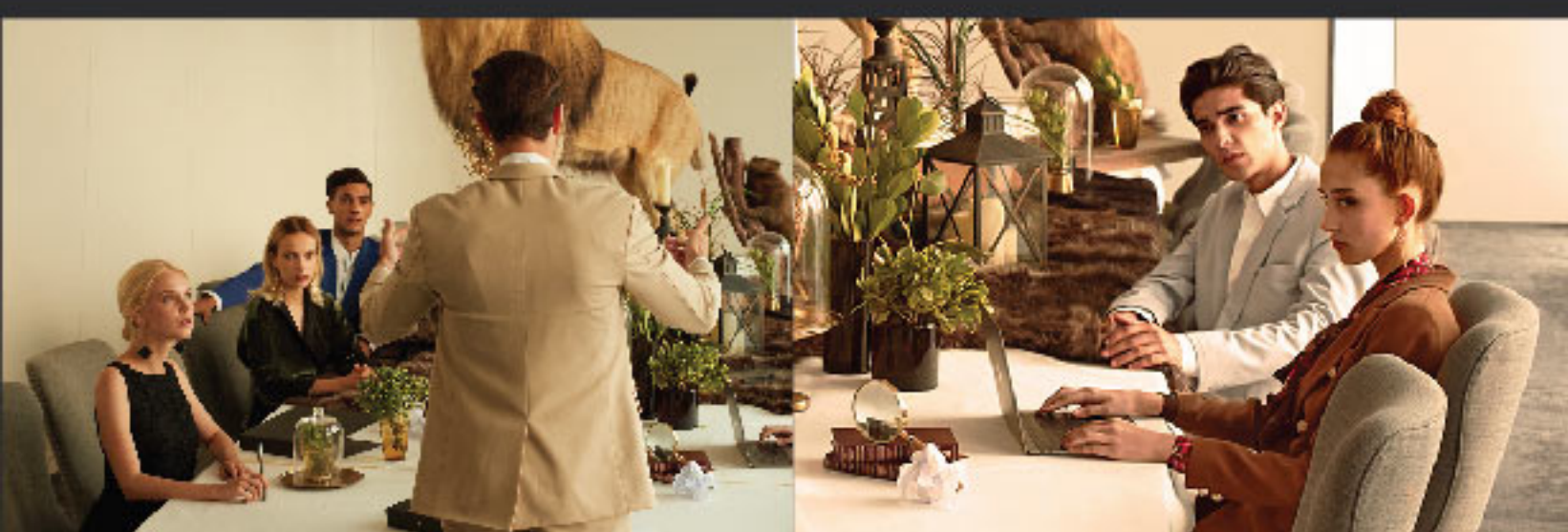
Private Party

Passion of Excellence with professional services, Transformative Events Perfectly suit with your style



Exhibition

Experience of Buying things



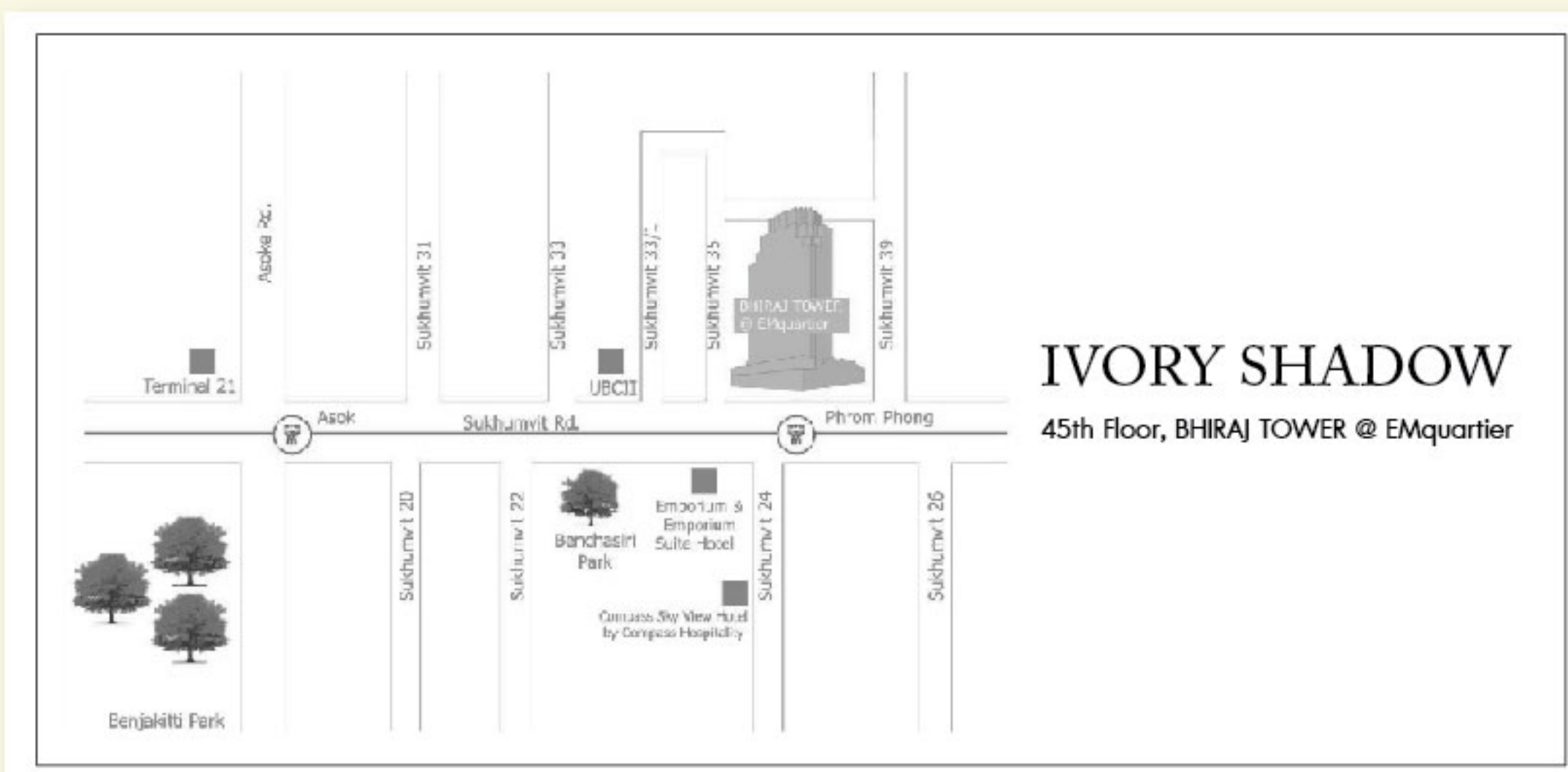
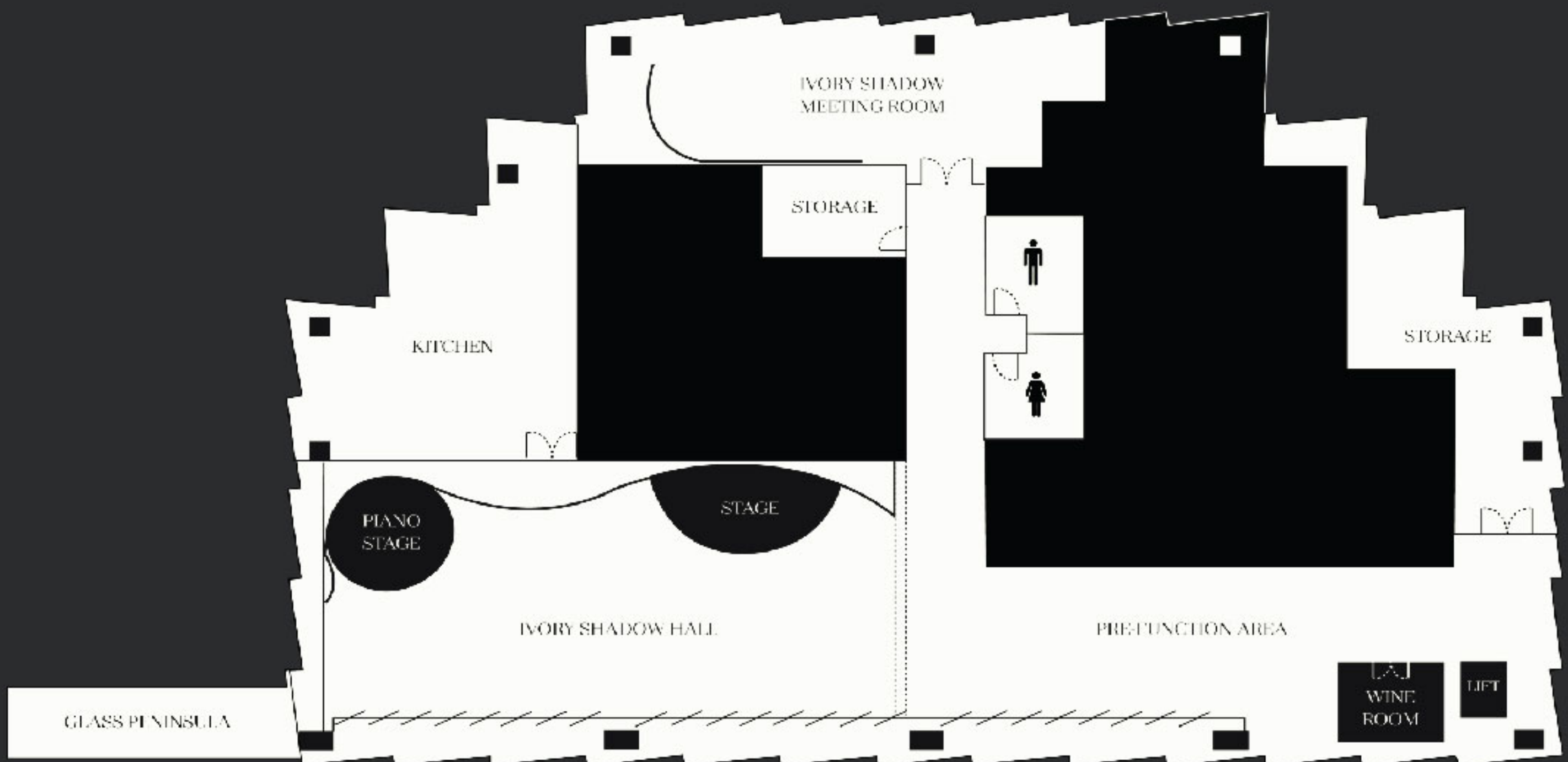
Meeting & Conference

Controlled Boardroom Environment

Capacity

Type of Event	Maximum (pax)
Banquet	
Western Sit-Down (Round Table Dia 1.8 m.)	100
Rectangular Table (Vertical 90 × 2.4 m.)	134
Rectangular Table (Horizontal 90 × 2.4m.)	118
Cocktail (Without Pre-Function)	145
Cocktail (Full Space)	232
Meeting	
Classroom Semi-Circle (0.6 x × 1.8m)	72
Classroom	96
Theatre Semi-Circle (0.6 × 1.8m)	150
Theatre	150

Hall Specification



IVORY SHADOW

45th Floor, BHIRAJ TOWER @ EMQuartier